



Physicians Caring for Texans

June 2011

To: Committee on Physician Health and Rehabilitation
Members and Consultants CMS PHR Committee Chairs
District Coordinators CMS PHR Committee Members
Regional Education Team Members

From: B. Dean McDaniel, DO, ^{BDM}Chair
Committee on Physician Health and Rehabilitation

Re: Conference – “Challenging Behaviors, Recovery, and Physician Health Programs”

You are cordially invited to attend the upcoming conference, “Challenging Behaviors, Recovery, and Physician Health Programs” (brochure enclosed).

Presented by the TMA Committee on Physician Health and Rehabilitation, the conference will be held September 16-17, 2011, at The St. Anthony Riverwalk Wyndham Hotel in San Antonio. The conference has been designated for a maximum of 7.25 AMA PRA Category 1 Credits™, 2 of which are ethics and/or professional responsibility education.

The conference will address the following topics: Addressing Physician Behavior: Benefit to Patients; Addiction: A Disease, Not A Choice; Managing Conflicts in the Workplace; A Practical Approach to the 12 Steps; Colorado Physician Health Program; TMA Committee on PHR: Current Issues; Texas Physician Health Program: Initial Data and Experience; and Looking Ahead: Physician Health Services in Texas to Promote Patient Safety.

Conference registration and welcome reception will be held on Friday from 5-6:30 pm. Light refreshments will be available. Attend the reception to be eligible for a special door prize—you must be present to win. A continental breakfast begins at 7 am on Saturday, followed by presentations. The conference adjourns at 5 pm. Visit exhibitors during the reception and breaks to be eligible for door prize drawings hosted by the TMA PHR Committee.

The conference is designed for physicians of all specialties; members and consultants of state and county medical society PHR committees; district coordinators; regional education team members; hospital representatives, including chiefs of staff, medical staff coordinators, administrators, and members of hospital-based peer assistance committees; and others interested in learning more about challenging behaviors, recovery, and physician health programs.

The advance registration fee is \$180 per person, which includes the conference syllabus, welcome reception, breaks, lunch, and the program. Registration information is contained in the brochure.

If you have any questions, please contact Linda Kuhn, PHR Program Manager, at (800) 880-1300, ext. 1342. I hope to see you in San Antonio.



Challenging Behaviors, Recovery, and Physician Health Programs

★ Friday and Saturday, Sept. 16-17, 2011 ★

The St. Anthony Riverwalk Wyndham Hotel
300 East Travis St., San Antonio, Texas

What Attendees Will Learn

Behaviors that characterize ethical professional conduct correlate with improved patient satisfaction and outcomes. Among physicians, there is a lifetime prevalence of substance use disorders of approximately 10 to 12 percent, similar to the general population. How does a physician or health care professional respond to a patient in recovery who objects to participating in self-help support groups? Conveying troubling news and engaging in difficult conversations with patients and their families are pivotally important, although anxiety-provoking components of clinical practice. Early detection of potentially impaired physicians not only protects patients, but also saves physicians' careers. Nationwide, physician health programs have proven successful with reports of five-year abstinence rates of 79 percent, return-to-work rates of 96 percent, and virtually no evidence of risk or harm to patients by participating physicians. Attend this conference to find out how you can respond ethically and efficiently to challenging behavior encounters and recovery issues, and utilize existing services and new initiatives to improve patient outcomes and physician health services in Texas.

Attendance Prerequisites

None

Competencies

The following competencies related to this activity were utilized to determine the practice gap:

- Institute of Medicine: Work in interdisciplinary teams
- Accreditation Council for Graduate Medical Education: Interpersonal and communication skills, and professionalism



Physicians Caring for Texans

CONFERENCE INFORMATION

Objectives

Upon completion of the program, participants should be able to:

1. Evaluate how ethical physician behavior correlates with improved patient satisfaction and outcomes.
2. Identify the disease aspects of Substance Use Disorders.
3. Practice a range of approaches that constructively address intense conversations and situations.
4. Assess the efficacy of self-help support groups.
5. Summarize the mission, activities, and success of the Colorado Physician Health Program.
6. Analyze the successes of the TMA Committee on Physician Health and Rehabilitation.

7. Interpret Texas Physician Health Program data and the experience of its participants.
8. Utilize existing services and new initiatives to improve patient outcomes and physician health services in Texas.

Who Should Attend

The program is designed for physicians of all specialties; members and consultants of state and county medical society physician health and rehabilitation (PHR) committees; district coordinators; regional education team members; hospital representatives, including chiefs of staff, medical staff coordinators, administrators, and members of hospital-based peer assistance committees; and others interested in learning more about challenging behaviors, recovery, and physician health programs.

SCHEDULE

Friday, Sept. 16

5-6:30 pm Registration and Welcome Reception

Light refreshments will be available. Attend the Welcome Reception to be eligible for a special door prize. You must be present to win!

Saturday, Sept. 17

Moderator: **B. Dean McDaniel, DO, Victoria**

7 am Registration and Continental Breakfast

7:30 am Welcome

B. Dean McDaniel, DO, Victoria

7:45 am Addressing Physician Behavior: Benefits to Patients (Ethics)

Luis T. Sanchez, MD, Waltham, Mass.

Health and wellness are essential to the physician's well-being. Not only does the physician benefit, but the physician's patients benefit when the physician is such a role model. Health-related problems and concerns, as well as healthy practices, will be presented. Attendees will be encouraged to participate in the discussion.

8:45 am Addiction: A Disease, Not a Choice

Harry Haroutunian, MD, Rancho Mirage, Calif.

Dr. Haroutunian will discuss the progression of the disease, including a brief neurobiological review of addiction. He will review the nature and concept of addiction and the issues relative to the professional and ethics involved. Dr. Haroutunian will examine how addiction affects the life of a person addicted to alcohol and provide new knowledge for physicians who are in a position to make a positive difference.

9:45 am Break

10:15 am Managing Conflicts in the Workplace (Ethics)

Luis T. Sanchez, MD, Waltham, Mass.

Dr. Sanchez will discuss Joint Commission leadership standards for disruptive behaviors and conflict management, as well as approaches for implementing and developing policies. Participants also will have the opportunity to share their experiences and best practices for managing conflicts in the workplace.

11:15 am A Practical Approach to the 12 Steps

Harry Haroutunian, MD, Rancho Mirage, Calif.

Dr. Haroutunian will discuss a practical step-by-step strategy for implementing a foundation for continued recovery and how self-help support groups can help achieve wholeness and integrity. Dr. Haroutunian will provide a paradigm for applying principles necessary for recovery.

12:15 pm Lunch (to be served in the Exhibitor Room)

1:15 pm Colorado Physician Health Program

Doris C. Gundersen, MD, Denver, Colo.

2:15 pm Break

2:45 pm TMA Committee on PHR: Current Issues

B. Dean McDaniel, DO, Victoria

Dr. McDaniel will discuss how the TMA Committee on PHR and TMA component county medical societies are involved in identification, intervention, and continuing care of Texas physicians. He will review how the committee promotes healthy lifestyles and incorporates prevention strategies in its activities to benefit patients and physicians alike. Dr. McDaniel will outline the committee's charge from the TMA House of Delegates and include a discussion of its successes.

3:30 pm Texas Physician Health Program: Initial Data and Experience

Lloyd M. Garland, MD, Lubbock

Dr. Garland will review the initial development of the Texas Physician Health Program (TXPHP), providing statistical information including comparison with other state physician health programs. He also will discuss the effectiveness of TXPHP.

4:15 pm Looking Ahead: Physician Health Services in Texas to Promote Patient Safety

B. Dean McDaniel, DO, Victoria, Moderator

Lloyd M. Garland, MD, Lubbock

Doris C. Gundersen, MD, Denver, Colo.

Luis T. Sanchez, MD, Waltham, Mass.

Panel members will discuss the potential future of physician health services in Texas, utilizing existing resources and new initiatives to promote patient safety, improve patient outcomes, and preserve physicians' careers.

5 pm Adjourn

CONFERENCE INFORMATION

Accreditation

The Texas Medical Association is accredited by the Accreditation Council for Continuing Medical Education (ACCME) to provide continuing medical education for physicians.

The Texas Medical Association designates this live activity for a maximum of 7.25 *AMA PRA Category 1 Credits*[™]. Physicians should claim only the credit commensurate with the extent of their participation in the activity.

Ethics and/or Professional Responsibility Education

The Texas Medical Association has designated this activity for 2 hours of ethics and/or professional responsibility education.

Educational Methods

Educational methods will include lectures, slide and case presentations, and audience participation.

Disclosure

The content of this conference does not relate to any product of a commercial interest; therefore, there are no relevant financial relationships to disclose.

Registration

The conference registration fee is \$180 per person before Sept. 1. The fee for registrations received after Sept. 1 and on site is \$230. The fee includes the welcome reception, breakfast, lunch, breaks, and conference syllabus.

Four easy ways to register:

- Visit the TMA website at www.texmed.org/Public/Events/ViewSeminars.aspx to register online.
- Fax registration form with credit card information to: TMA Knowledge Center at (512) 370-1634.
- Mail registration form and check or credit card information to: Texas Medical Association, Attn: TMA Knowledge Center, 401 W. 15th St., Austin, TX 78701-1680.
- Call (800) 880-7955 or (512) 370-1550 to register with your credit card.

Individuals registered for the conference may invite their spouse or a guest to attend the Friday reception for a \$35 fee. If the guest will attend the conference, full registration fees apply.

Cancellation Policy

A \$25 fee applies to all cancellations. TMA will issue no refunds after Sept. 1. All cancellation requests must be made in writing to Linda Kuhn, Texas Medical Association, 401 W. 15th St., Austin, TX 78701, or faxed to (512) 370-1347.

PHR Exhibit Hall

Door Prize Drawings!

Various companies have been invited to exhibit during the PHR conference. Meals and breaks will be available in the exhibit area. You will receive a list of exhibitors as part of the conference syllabus handed out at registration.

Please take time to visit our exhibitors, as they help keep the cost of this meeting low for attendees. The TMA Committee on PHR will host door prize drawings for those of you who visit the exhibitors.

Housing

The St. Anthony Riverwalk Wyndham Hotel has confirmed the following rates for Friday and Saturday, Sept. 16-17, for conference guests:

\$134 (single); \$144 (double).

Make your hotel reservation by phone at (800) 996-3426 or (210) 227-4392, or by using the online booking link. Identify yourself as a participant in the Texas Medical Association conference to receive the special rate. You can make your online reservations at www.wyndham.com/groupevents2010satst_texasmedical/main.wnt.

The St. Anthony will hold a block of rooms at the conference room rate until Aug. 26, 2011, at which time it will release any unreserved rooms from the block.

Location and Amenities

Built in 1909, The St. Anthony is located across from Travis Park in the heart of downtown San Antonio. It is within walking distance of the San Antonio Convention Center, Paseo del Rio Riverwalk, Rivercenter Mall, the Alamo, and La Villita.

Guests may relax in the hotel's serene surroundings while enjoying the historical and beautifully restored ambiance throughout the hotel. Experience the truly magnificent décor and historic tradition offered by The St. Anthony and savor the fabulous fine dining, elegant guestrooms, nurturing spa services, and warm and hospitable service. With a state-of-the-art fitness center and a variety of specialized spa services, The St. Anthony provides a fulfilling experience designed to relax and indulge your senses. Experience one of many massage therapies offered by DASA Spa in its private massage rooms.

Transportation

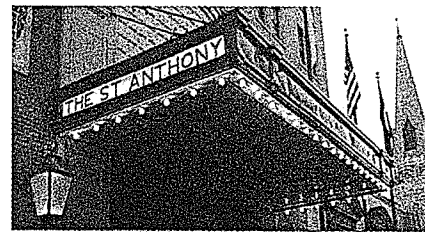
From the San Antonio International Airport:

- Take Highway 281 South to IH 37 South.
- Exit Houston Street, turn right at light and follow to Broadway.
- Turn left and then turn right onto Travis Street.
- The hotel is located one block ahead on the left, one block away from the Alamo.

The TMA Committee on Physician Health and Rehabilitation

The Texas Medical Association Committee on Physician Health and Rehabilitation was established to identify, strongly urge evaluation and treatment of, and review rehabilitation provided to physicians with impairments within Texas.

The state committee, an advocate for the physician in recovery, is composed of nine members; student, resident, and alliance representatives; and several consultants. Approximately 50 county medical society PHR committees are in operation. In addition, 15 district coordinators are available for liaison and facilitating referrals from TMA's confidential PHR hotline at (800) 880-1640 or (512) 370-1640, where physicians can seek help from or be referred to the committee.



SEMINAR PLANNING COMMITTEE & FACULTY

Planning Committee

Coordinator: Viki Chancellor, MD
Private Practice, Mansfield

Kenneth G. Davis, MD, CPE
Private Practice, Conroe

Lloyd M. Garland, MD
Former Private Practice/Retired, Lubbock

Anand W. Mehendale, MD
Phoenix Medical Associates, Kerrville

Georgia A. Thomas, MD
The University of Texas M.D. Anderson Cancer Center,
Houston

Seminar Faculty

Lloyd M. Garland, MD
Texas Physician Health Program (former medical director),
Lubbock

Doris C. Gundersen, MD
Colorado Physician Health Program, Denver, Colo.

Harry Haroutunian, MD
Betty Ford Center, Rancho Mirage, Calif.

B. Dean McDaniel, DO
Private Practice, Victoria

Luis T. Sanchez, MD
Physician Health Services, Inc., Waltham, Mass.

Silence is Not Always Golden...

Please call if you know of a physician who needs our help.

Texas Medical Association Committee on Physician Health and Rehabilitation

Members

B. Dean McDaniel, DO, Victoria, Chair
Harry L. Faust Jr., DO, Friendswood, Vice Chair
Kenneth G. Davis, MD, CPE, Conroe
Edward S. Furber, MD, Fort Worth
Cheryl L. Hurd, MD, Fort Worth
Lois A. Killewich, MD, PhD, Galveston
Theodore J. Krum, MD, Irving
Michael C. Leath, MD, Longview
Orloff Monaghan, MD, San Angelo

District Coordinators

District 1 Earl W. Gorby, MD, El Paso
District 2 Irvin J. Reiner, MD, Odessa
District 3 Roger B. Yandell, MD, Lubbock
District 4 Marc Wimpee, MD, San Angelo
District 5 Brooks M. Mullen, MD, Seguin
District 6 Joseph John Martinez-O'Hara, MD, Brownsville
District 7 Herbert C. Munden Jr., MD, Austin
District 8 B. Dean McDaniel, DO, Victoria
District 9 Harry L. Faust Jr., DO, Friendswood
District 10 Carlton J. Lewis, DO, Lufkin
District 11 Gregory P. Johnson, MD, PA, Hideaway
District 12 Mahesh R. Dave, MD, Bryan
District 13 Gregory J. Phillips, MD, Fort Worth
District 14 Theodore J. Krum, MD, Irving
District 15 Vacant

Hotline
(800) 880-1300

REGISTRATION FORM

CHALLENGING BEHAVIORS, RECOVERY, AND PHYSICIAN HEALTH PROGRAMS

(Please duplicate as necessary; mail or fax.)

Registration fee: \$180 per person if received by Sept. 1.

Late and on-site registration fee: \$230 per person

Name: _____

Address: _____

City, State, ZIP: _____

Phone: _____ Fax Number: _____

E-mail Address: _____

The Friday reception is included in the registration fee for conference attendees. Guests may accompany the attendee to the reception (\$35 each). The following guests will attend the Friday reception:

Check payable to Texas Medical Association Amount \$ _____

Charge to my credit card: Visa MasterCard AMEX Amount \$ _____

Card #: _____ Expiration Date: _____

Card Holder*: _____

Signature*: _____

*Credit card payments must include cardholder name and signature.

How did you hear about this conference?

Mailing _____

Website _____

Word of mouth _____ Other _____



Disabled individuals in need of special assistance with regard to this educational program should contact Linda Kuhn at the Texas Medical Association at (800) 880-1300, ext. 1342, or (512) 370-1342.

Texas Medical Association

Attn: Linda Kuhn
401 W. 15th St.
Austin, TX 78701-1680
(800) 880-1300, ext. 1342
(512) 370-1342
Fax: (512) 370-1347